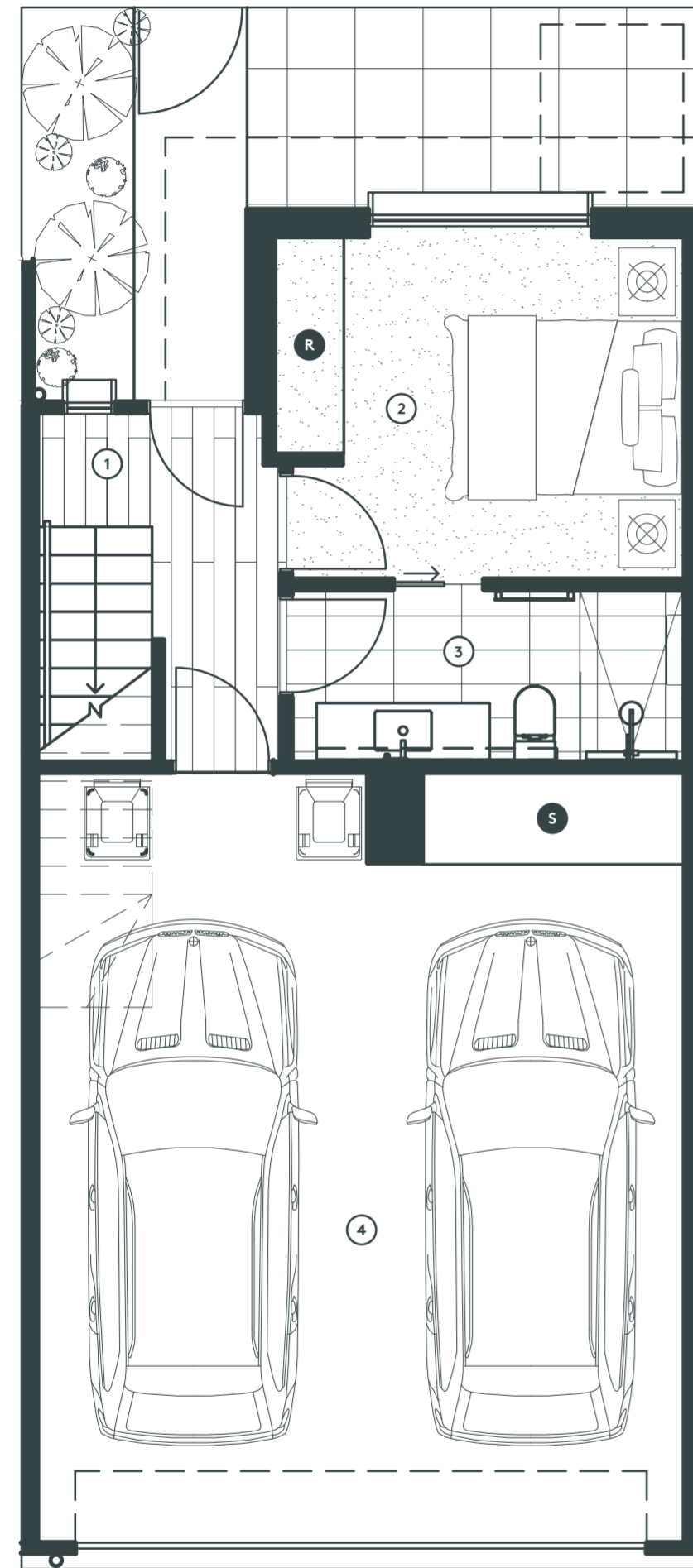


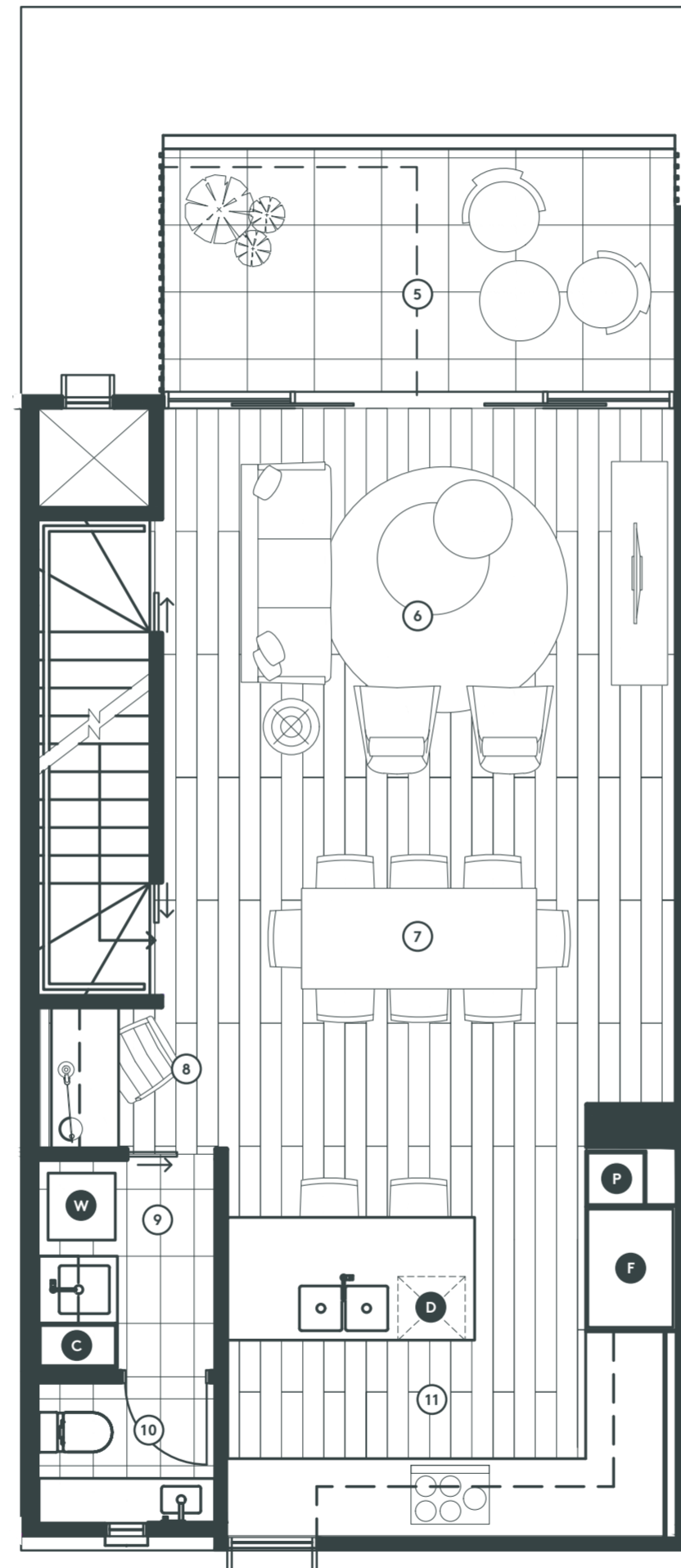


## Townhouse Style B

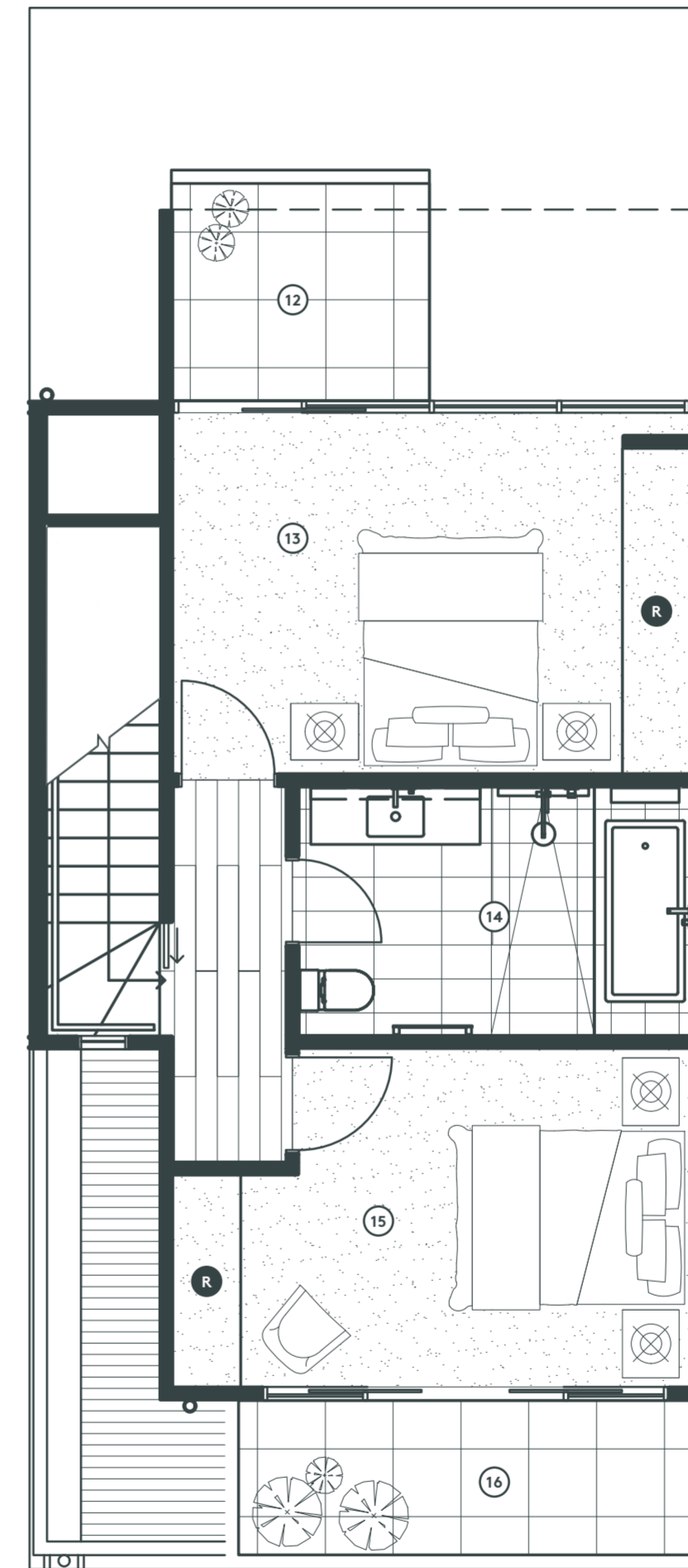
- 3 bedrooms
- 2.5 bathrooms
- 2 car spaces



GROUND FLOOR



FIRST FLOOR



SECOND FLOOR

Ground Floor	29.8m <sup>2</sup>	3.2 squares
First Floor	59.9m <sup>2</sup>	6.1 squares
Second Floor	44.5m <sup>2</sup>	4.8 squares
Garage	38.2m <sup>2</sup>	4.1 squares
<b>Interior Total</b>	<b>169.4m<sup>2</sup></b>	<b>18.2 squares</b>
Balconies	15.6m <sup>2</sup>	1.7 squares

- 1 Entry
- 2 Bedroom 1 (3.0 × 3.0m)
- 3 Bathroom 1
- 4 Double Garage (5.6 × 6.0m)
- 5 Balcony
- 6 Living Room (4.5 × 3.3m)
- 7 Dining Room (4.5 × 2.9m)
- 8 Study
- 9 Laundry
- 10 Powder Room
- 11 Kitchen (4.0 × 3.4m)
- 12 Balcony
- 13 Bedroom 2 (3.9 × 3.1m)
- 14 Bathroom 2
- 15 Bedroom 3 (3.4 × 3.0m)
- 16 Balcony

- F Fridge\*
- D Dishwasher
- P Pantry
- W Washing Machine\*
- R Built In Robe
- S Storage
- C Cupboard

\* Fridge and washing machine not included.

All drawings, layouts and area calculations are indicative only and are subject to approval by the relevant authorities and alterations due to design development. Drawings are not to be used for construction. All apartment and balcony areas are calculated as gross floor area in accordance with the Method of Measurement for Residential Property as published by the Property Council of Australia.

© Copyright Bruce Henderson Architects P/L