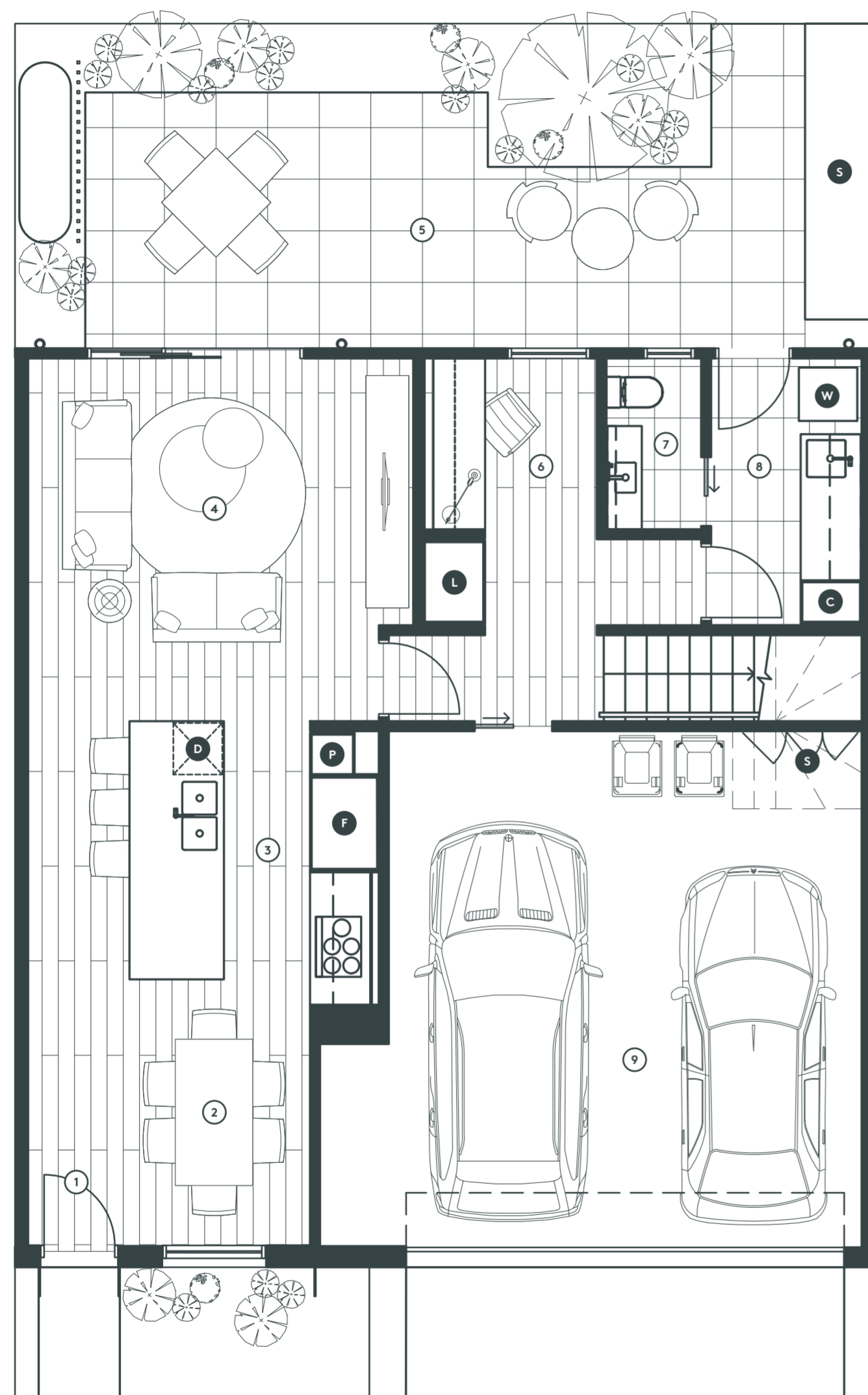




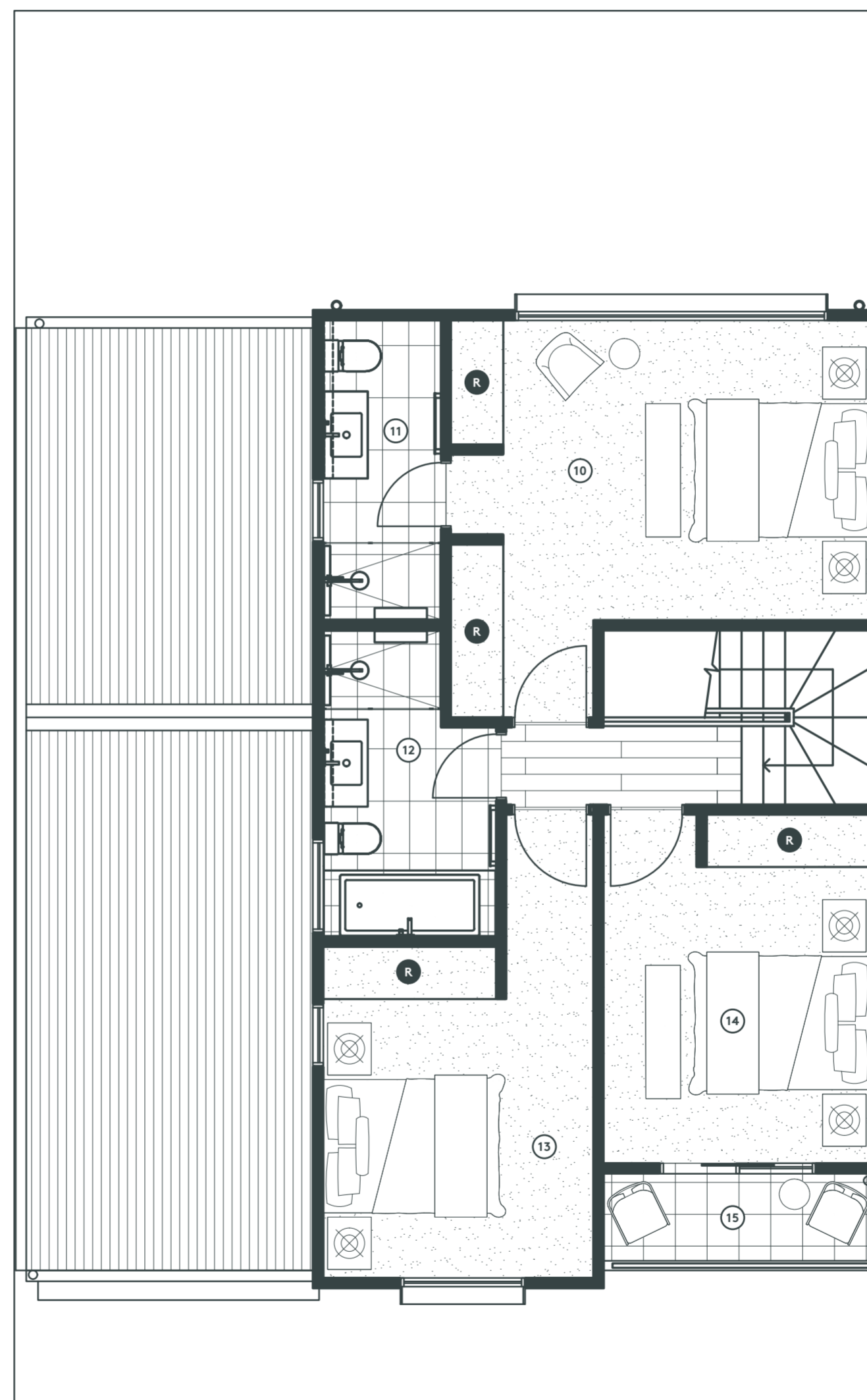
Townhouse Style C

- 3 bedrooms
- 2.5 bathrooms
- 1 study
- 2 car spaces

Ground Floor	72.0m ²	7.8 squares
First Floor	64.8m ²	7.0 squares
Garage	34.8m ²	3.7 squares
Interior Total	171.6m²	18.5 squares
Balcony	3.6m ²	0.4 squares



GROUND FLOOR



FIRST FLOOR

- 1 Entry
- 2 Dining Room (2.1 x 2.7m)
- 3 Kitchen (4.0 x 3.2m)
- 4 Living Room (4.4 x 3.3m)
- 5 Courtyard
- 6 Study
- 7 Powder Room
- 8 Laundry
- 9 Double Garage (5.5 x 6.0m)
- 11 Bedroom 1 (4.2 x 3.4m)
- 10 Ensuite
- 12 Bathroom
- 13 Bedroom 2 (3.1 x 3.2m)
- 14 Bedroom 3 (3.0 x 3.4m)
- 15 Balcony

- F Fridge*
- D Dishwasher
- P Pantry
- W Washing Machine*
- R Built In Robe
- S Storage
- L Linen Cupboard
- C Cupboard



* Fridge and washing machine not included.

All drawings, layouts and area calculations are indicative only and are subject to approval by the relevant authorities and alterations due to design development. Drawings are not to be used for construction. All apartment and balcony areas are calculated as gross floor area in accordance with the Method of Measurement for Residential Property as published by the Property Council of Australia.

© Copyright Bruce Henderson Architects P/L