




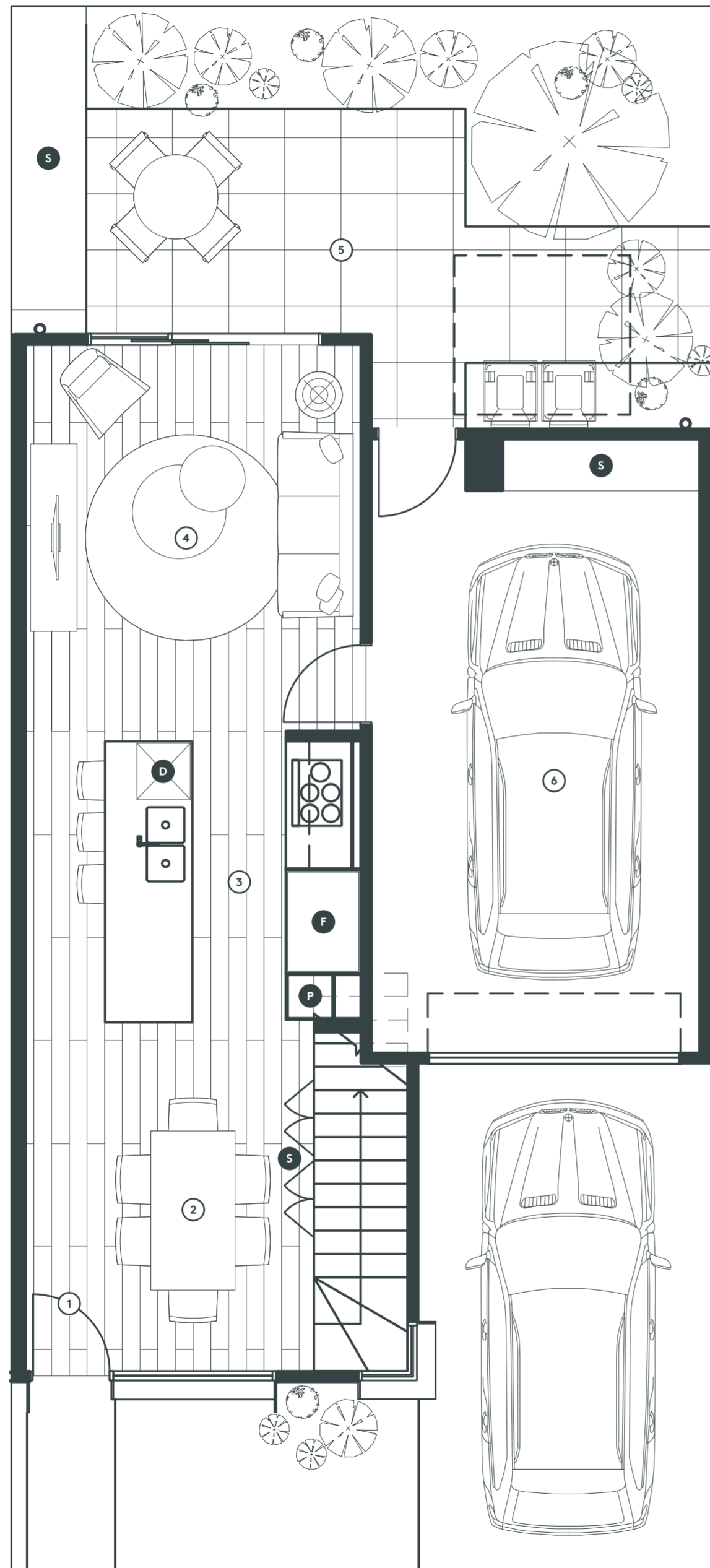
## Townhouse Style H

-  **3 bedrooms**
-  **2 bathrooms**
-  **2 car spaces**

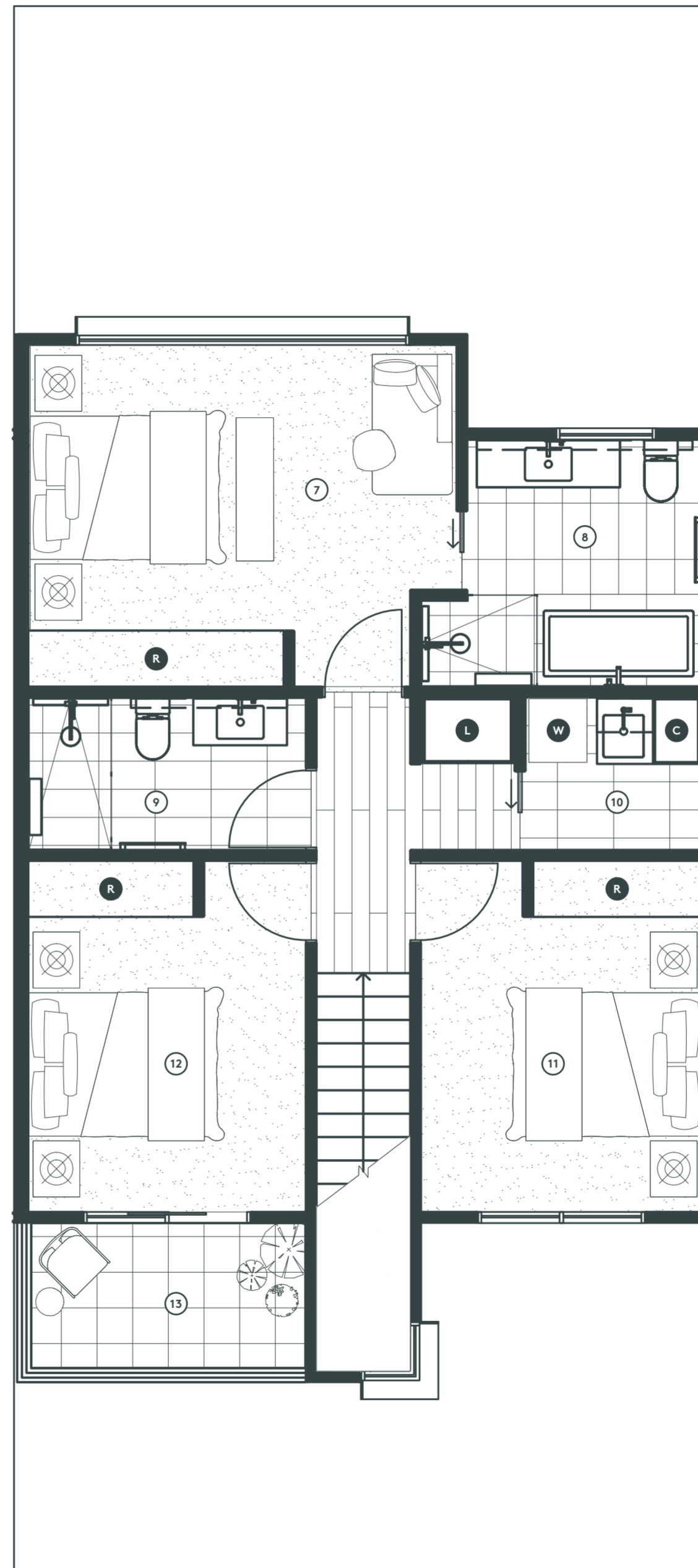
Ground Floor	46.8m <sup>2</sup>	5.0 squares
First Floor	66.3m <sup>2</sup>	7.1 squares
Garage	22.7m <sup>2</sup>	2.4 squares
<b>Interior Total</b>	<b>135.8m<sup>2</sup></b>	<b>14.6 squares</b>
Balcony	5.3m <sup>2</sup>	0.6 squares

- 1 Entry
- 2 Dining Room (2.5 × 3.7m)
- 3 Kitchen (3.5 × 3.0m)
- 4 Living Room (3.5 × 4.2m)
- 5 Courtyard
- 6 Single Garage (3.5 × 6.0m)
- 7 Bedroom 1 (4.1 × 3.0m)
- 8 Ensuite
- 9 Bathroom
- 10 Laundry
- 11 Bedroom 2 (3.0 × 3.1m)
- 12 Bedroom 3 (3.0 × 3.1m)
- 13 Balcony

- F Fridge\*
- D Dishwasher
- P Pantry
- W Washing Machine\*
- R Built In Robe
- S Storage
- L Linen Cupboard
- C Cupboard



GROUND FLOOR



FIRST FLOOR