

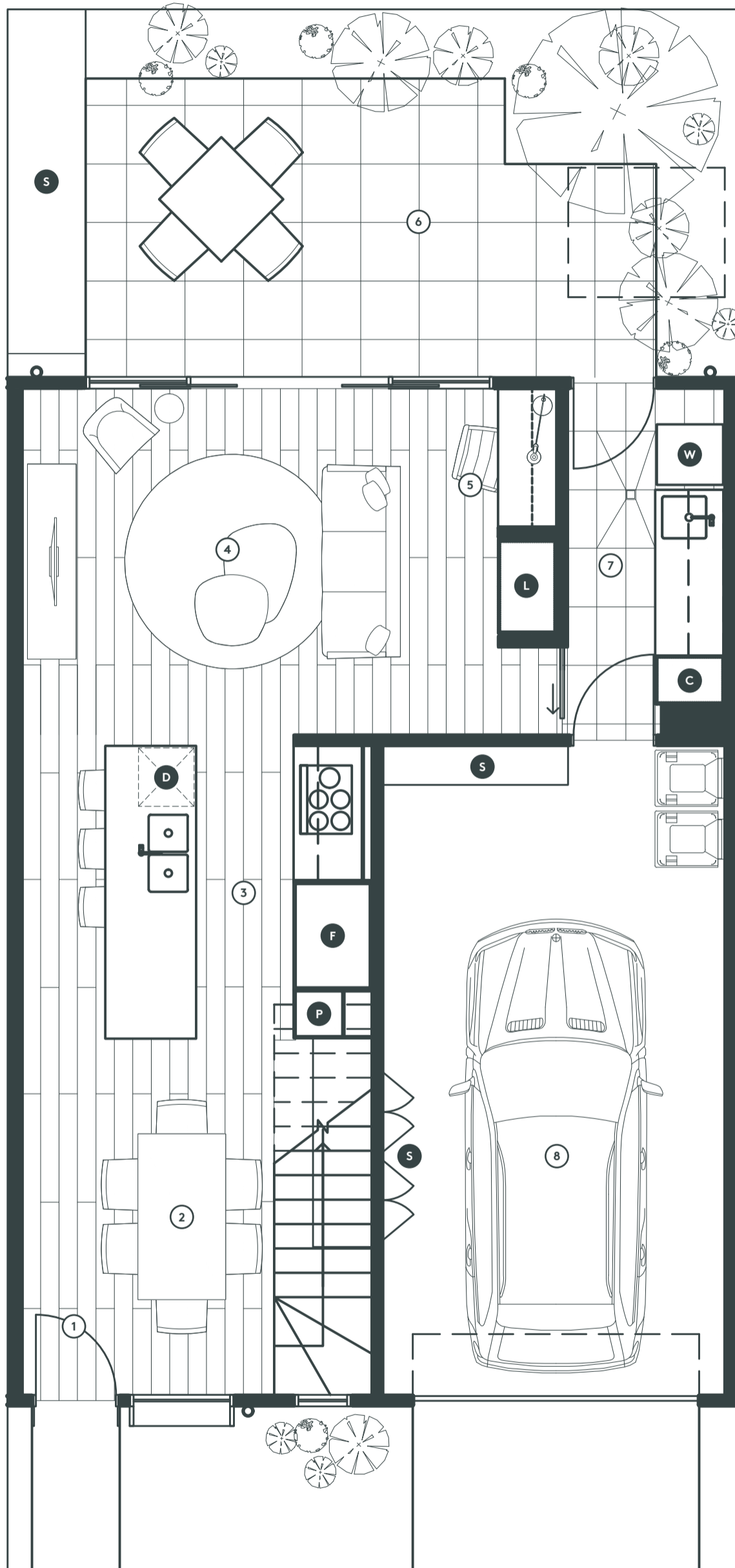


Townhouse Style G

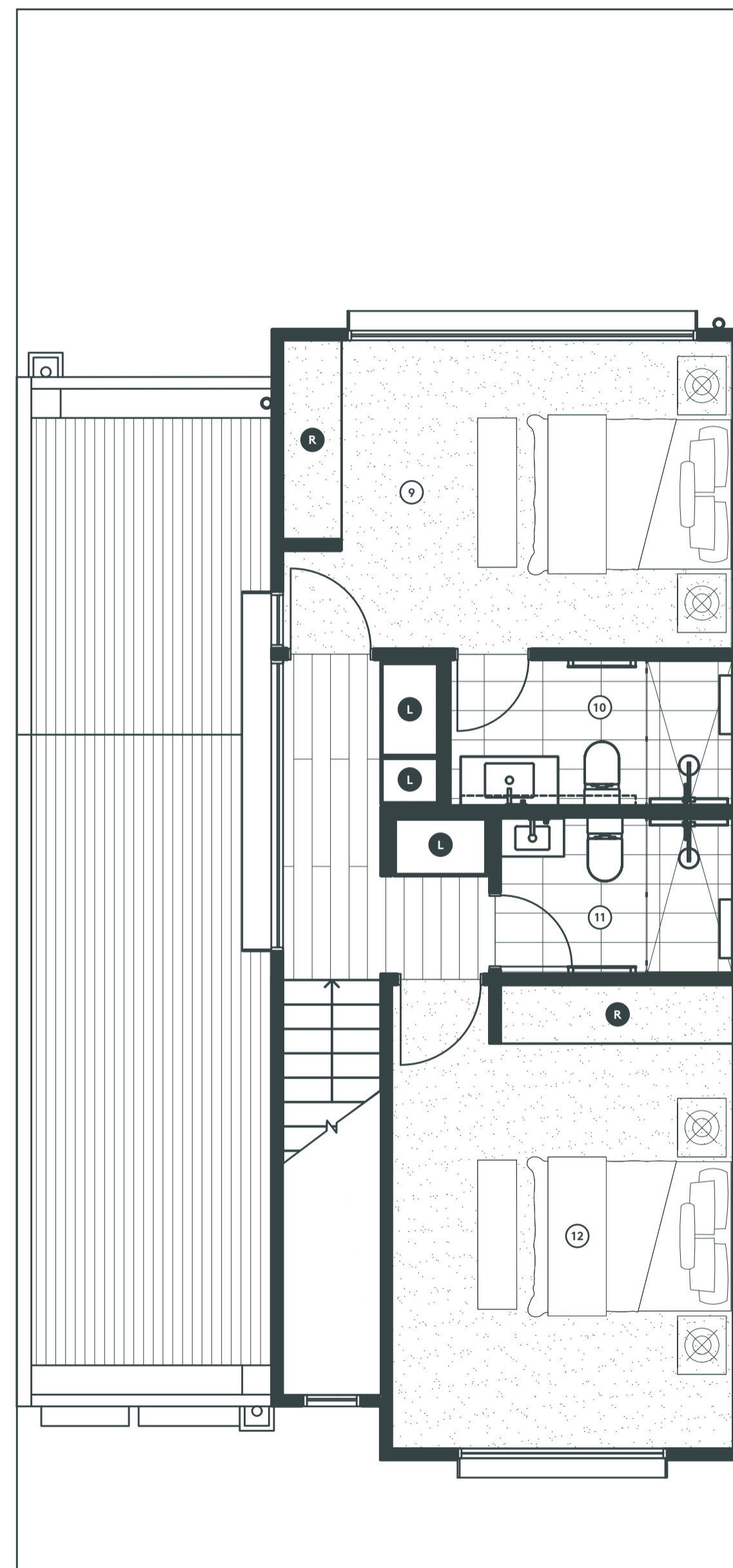
- 2 bedrooms
- 2 bathrooms
- 1 car space

Ground Floor	55.8m ²	6.0 squares
First Floor	51.9m ²	5.6 squares
Garage	23.3m ²	2.5 squares

Interior Total 131.0m² 14.1 squares



GROUND FLOOR



FIRST FLOOR

- 1 Entry
- 2 Dining Room (2.5 × 3.6m)
- 3 Kitchen (3.5 × 3.0m)
- 4 Living Room (4.8 × 3.5m)
- 5 Study
- 6 Courtyard
- 7 Laundry
- 8 Double Garage (3.5 × 6.6m)
- 9 Bedroom 1 (4.0 × 3.1m)
- 10 Ensuite
- 11 Bathroom
- 12 Bedroom 2 (3.5 × 4.1m)

- F Fridge*
- D Dishwasher
- P Pantry
- W Washing Machine*
- R Built In Robe
- S Storage
- L Linen Cupboard
- C Cupboard



* Fridge and washing machine not included.
All drawings, layouts and area calculations are indicative only and are subject to approval by the relevant authorities and alternations due to design development. Drawings are not to be used for construction. All apartment and balcony areas are calculated as gross floor area in accordance with the Method of Measurement for Residential Property as published by the Property Council of Australia.