



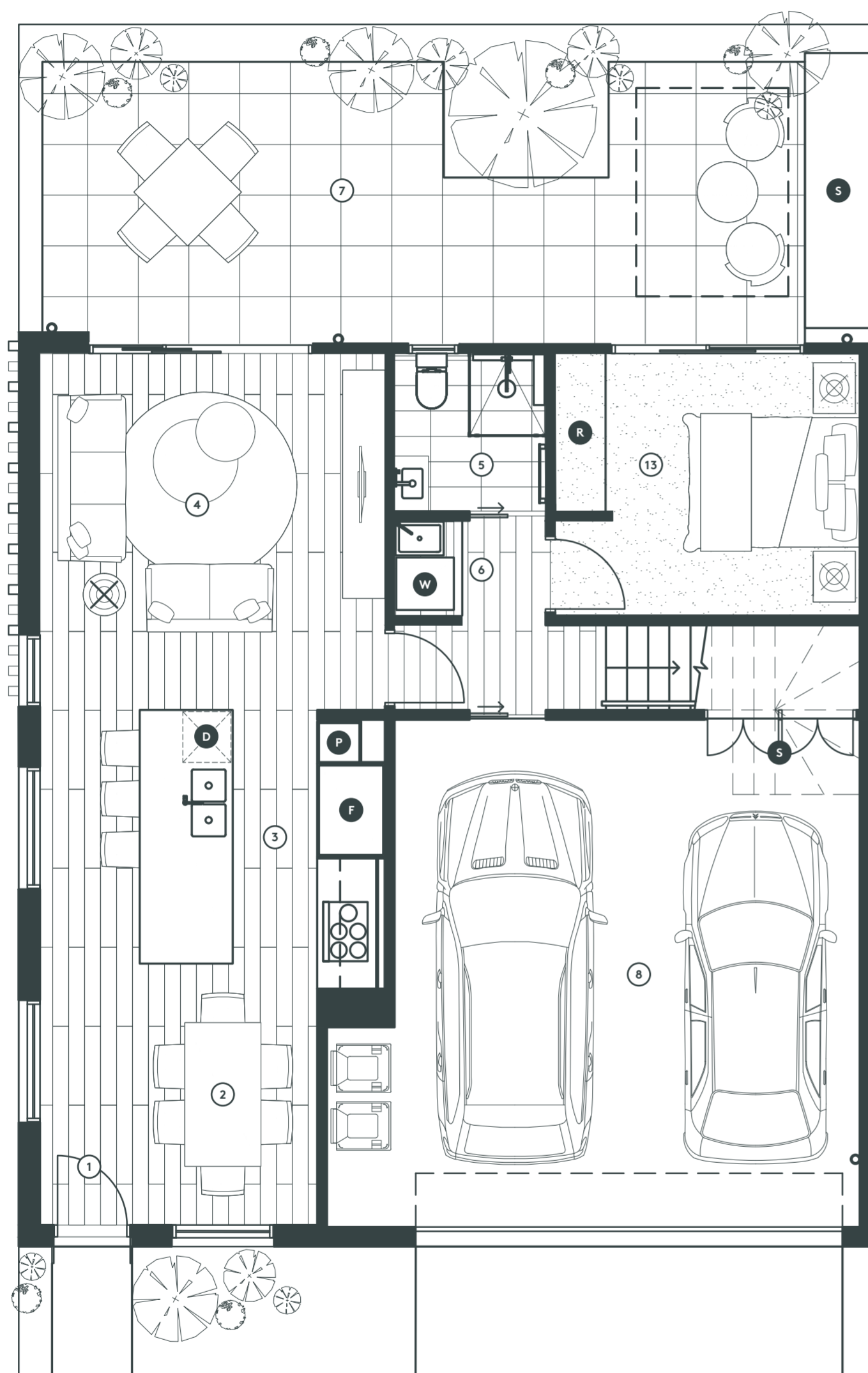




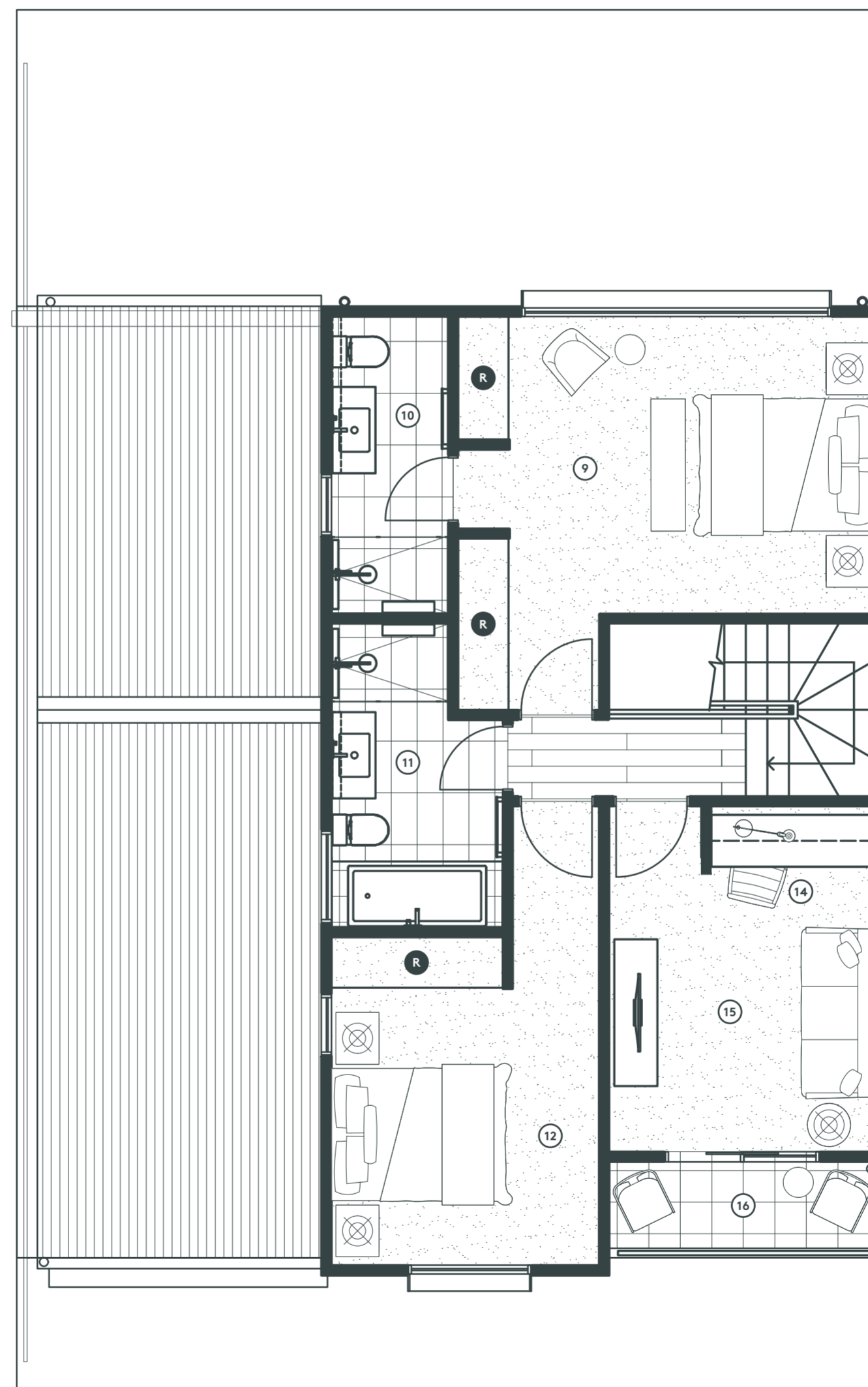
## Townhouse Style F

-  **3 bedrooms**
-  **3 bathrooms**
-  **1 study**
-  **2 car spaces**

Ground Floor	73.0m <sup>2</sup>	7.9 squares
First Floor	64.9m <sup>2</sup>	7.0 squares
Garage	34.8m <sup>2</sup>	3.7 squares
<b>Interior Total</b>	<b>172.7m<sup>2</sup></b>	<b>18.6 squares</b>
Balcony	3.6m <sup>2</sup>	0.4 squares



GROUND FLOOR



FIRST FLOOR

- 1 Entry
- 2 Dining Room (2.1 x 2.7m)
- 3 Kitchen (4.0 x 3.2m)
- 4 Living Room (4.0 x 4.2m)
- 5 Powder Room
- 6 European Laundry
- 7 Courtyard
- 8 Double Garage (5.5 x 6.0m)
- 9 Bedroom 1 (4.2 x 3.4m)
- 10 Ensuite
- 11 Bathroom
- 12 Bedroom 2 (3.1 x 3.2m)
- 13 Bedroom 3 (3.0 x 3.1m)
- 14 Study
- 15 Retreat (3.0 x 3.3m)
- 16 Balcony

- F Fridge\*
- D Dishwasher
- P Pantry
- W Washing Machine\*
- R Built In Robe
- S Storage



\* Fridge and washing machine not included.

All drawings, layouts and area calculations are indicative only and are subject to approval by the relevant authorities and alterations due to design development. Drawings are not to be used for construction. All apartment and balcony areas are calculated as gross floor area in accordance with the Method of Measurement for Residential Property as published by the Property Council of Australia.

© Copyright Bruce Henderson Architects P/L