


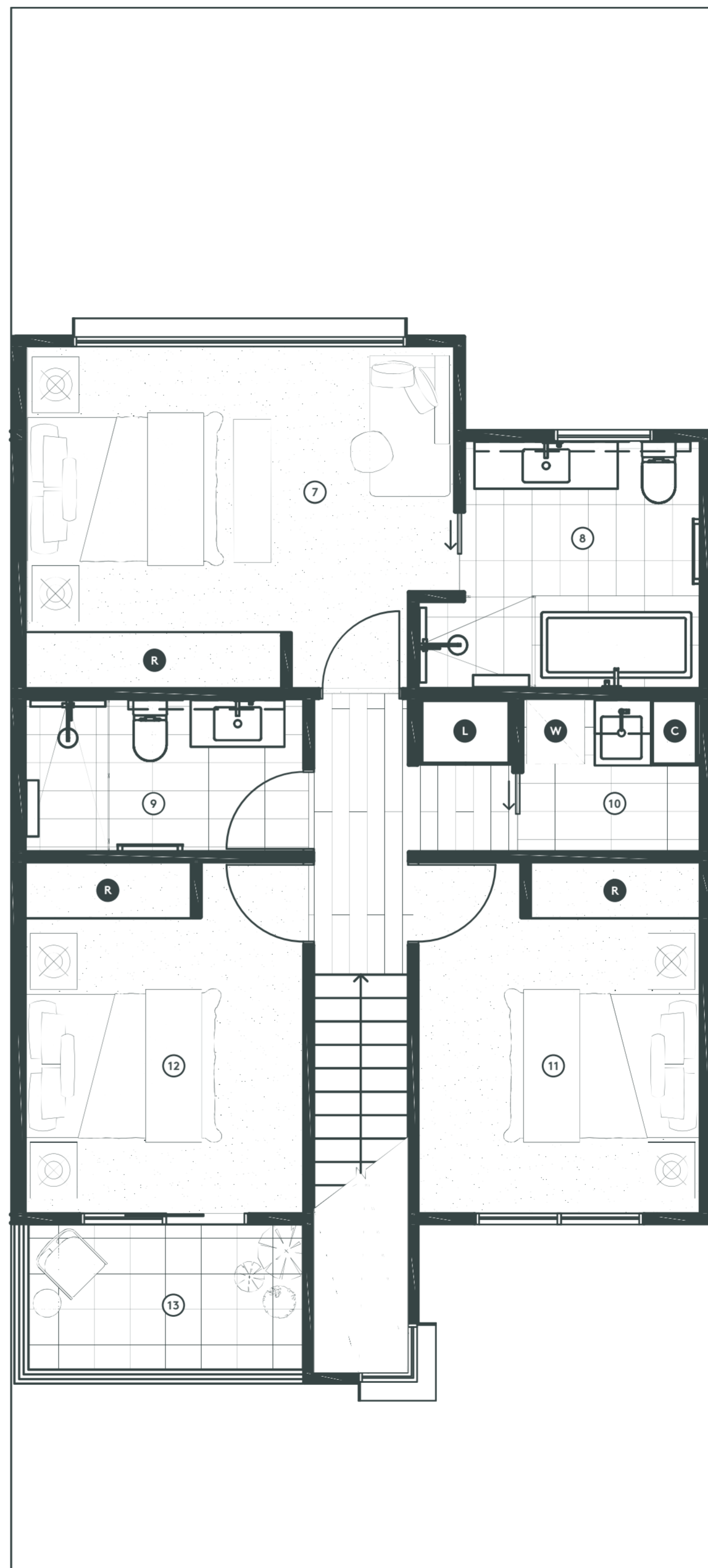
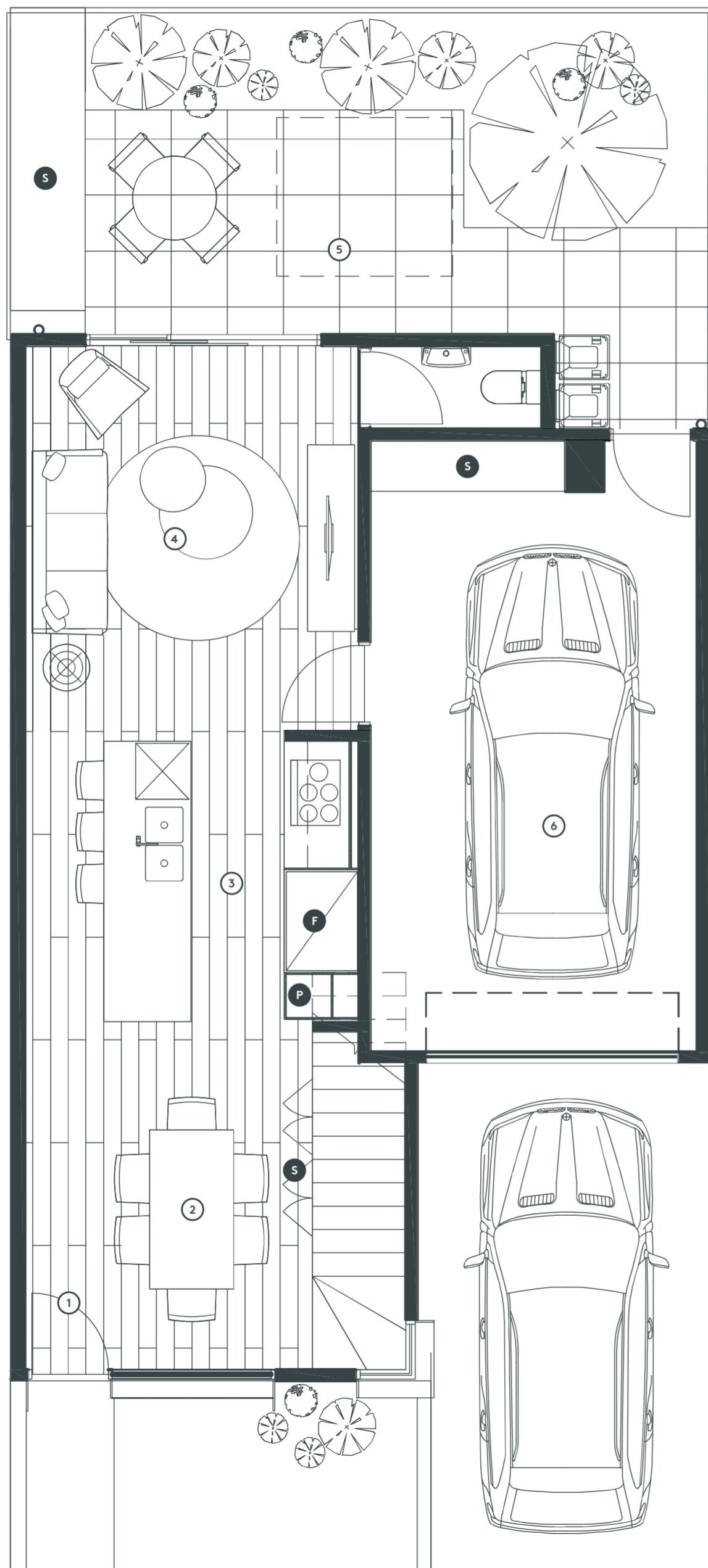




Townhouse Style H

-  **3 bedrooms**
-  **2.5 bathrooms**
-  **2 car spaces**

Ground Floor	48.8m ²	5.2 squares
First Floor	66.3m ²	7.1 squares
Garage	22.7m ²	2.4 squares
Interior Total	137.8m²	14.7 squares
Balcony	5.3m ²	0.6 squares



- 1 Entry
- 2 Dining Room (2.5 × 3.7m)
- 3 Kitchen (3.5 × 3.0m)
- 4 Living Room (3.5 × 4.2m)
- 5 Courtyard
- 6 Single Garage (3.5 × 6.0m)
- 7 Bedroom 1 (4.1 × 3.0m)
- 8 Ensuite
- 9 Bathroom
- 10 Laundry
- 11 Bedroom 2 (3.0 × 3.1m)
- 12 Bedroom 3 (3.0 × 3.1m)
- 13 Balcony

- F Fridge*
- D Dishwasher
- P Pantry
- W Washing Machine*
- R Built In Robe
- S Storage
- L Linen Cupboard
- C Cupboard



* Fridge and washing machine not included.

All drawings, layouts and area calculations are indicative only and are subject to approval by the relevant authorities and alterations due to design development. Drawings are not to be used for construction. All apartment and balcony areas are calculated as gross floor area in accordance with the Method of Measurement for Residential Property as published by the Property Council of Australia.

© Copyright Bruce Henderson Architects P/L