





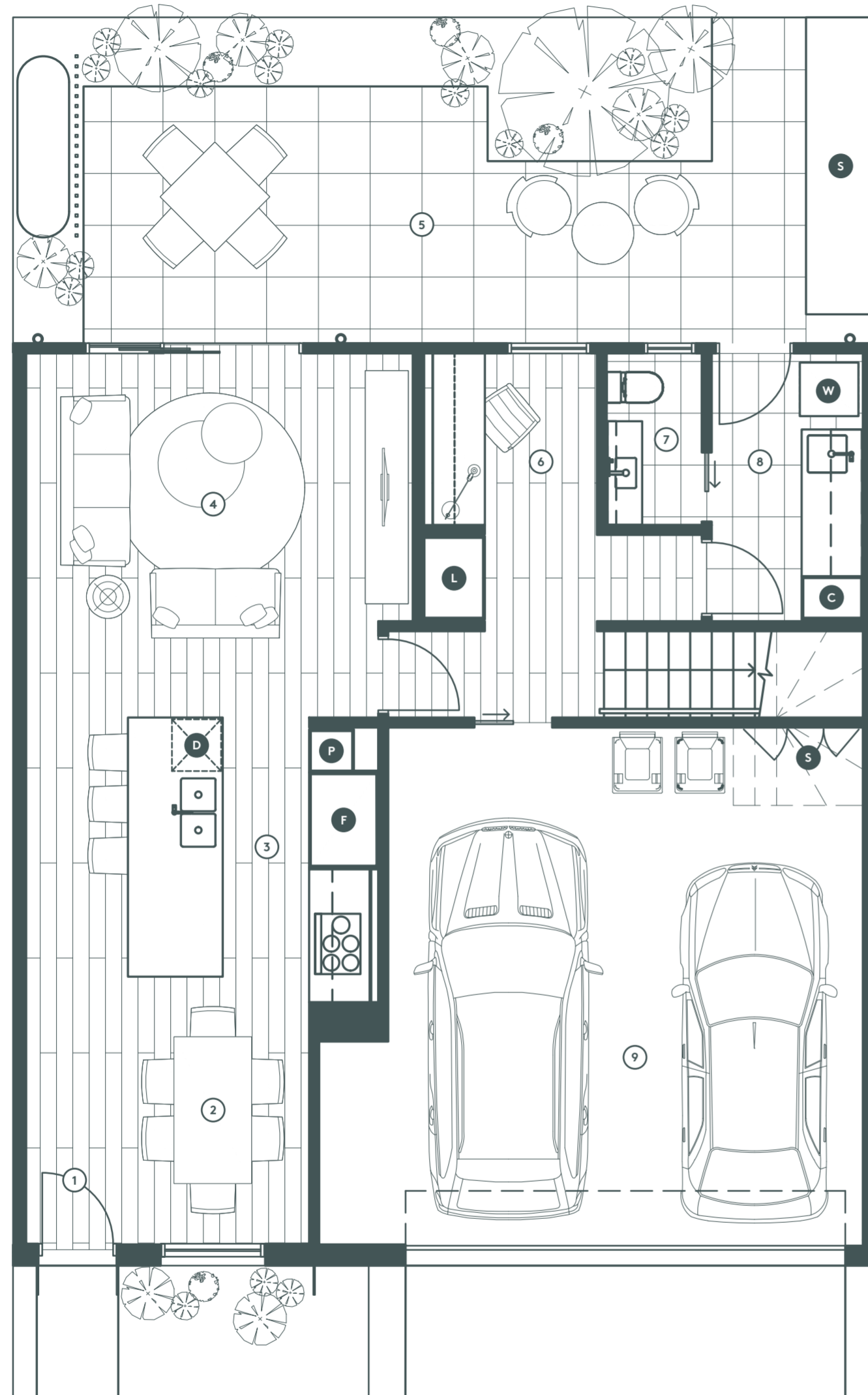
## Townhouse Style C

-  3 bedrooms
-  2.5 bathrooms
-  1 study
-  2 car spaces

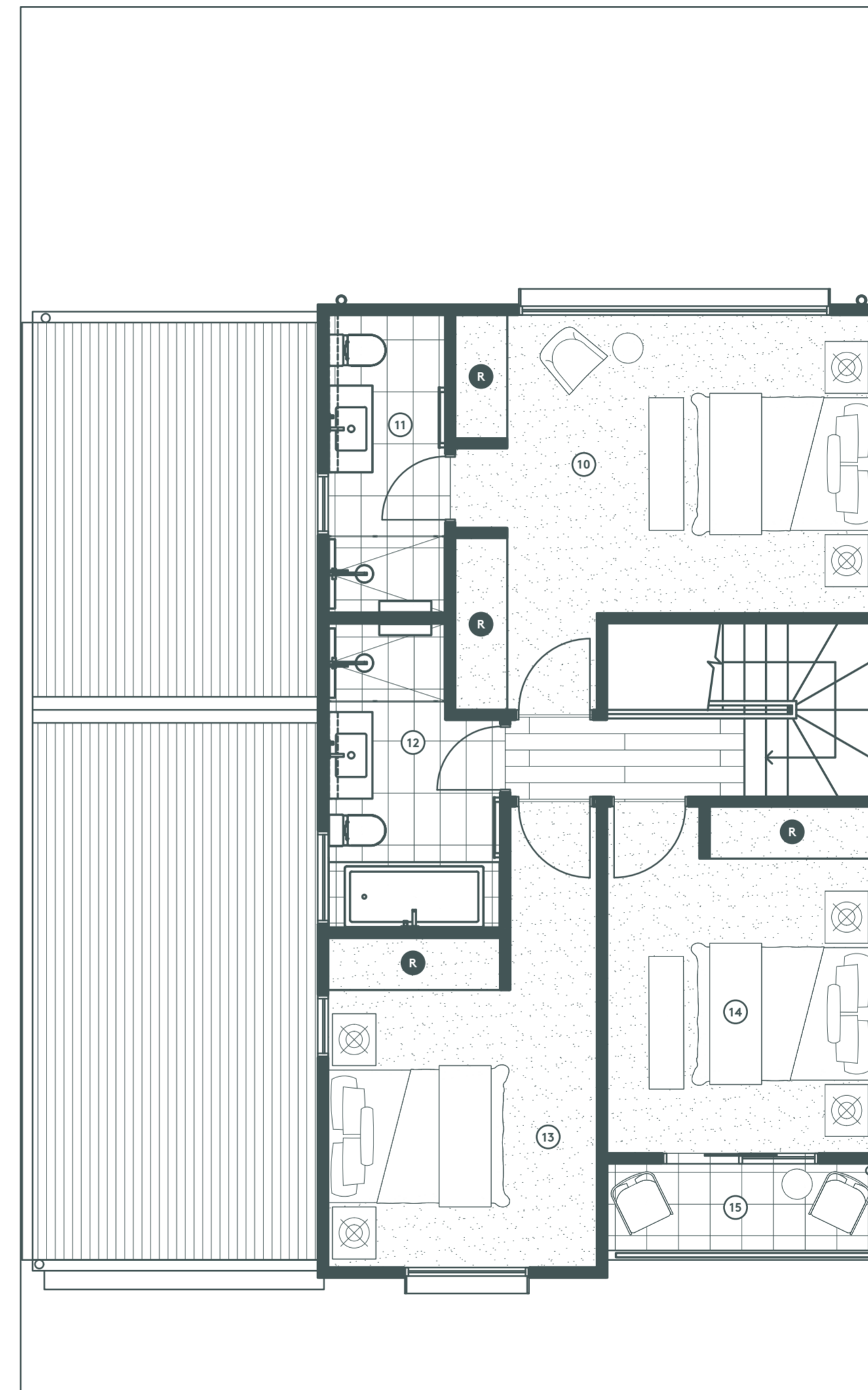
Ground Floor	72.0m <sup>2</sup>	7.8 squares
First Floor	64.8m <sup>2</sup>	7.0 squares
Garage	34.8m <sup>2</sup>	3.7 squares
<b>Interior Total</b>	<b>171.6m<sup>2</sup></b>	<b>18.5 squares</b>
Balcony	3.6m <sup>2</sup>	0.4 squares

- 1 Entry
- 2 Dining Room (2.1 x 2.7m)
- 3 Kitchen (4.0 x 3.2m)
- 4 Living Room (4.4 x 3.3m)
- 5 Courtyard
- 6 Study
- 7 Powder Room
- 8 Laundry
- 9 Double Garage (5.5 x 6.0m)
- 11 Bedroom 1 (4.2 x 3.4m)
- 10 Ensuite
- 12 Bathroom
- 13 Bedroom 2 (3.1 x 3.2m)
- 14 Bedroom 3 (3.0 x 3.4m)
- 15 Balcony

- F Fridge\*
- D Dishwasher
- P Pantry
- W Washing Machine\*
- R Built In Robe
- S Storage
- L Linen Cupboard
- C Cupboard



GROUND FLOOR



FIRST FLOOR